



Westside Best Buy!

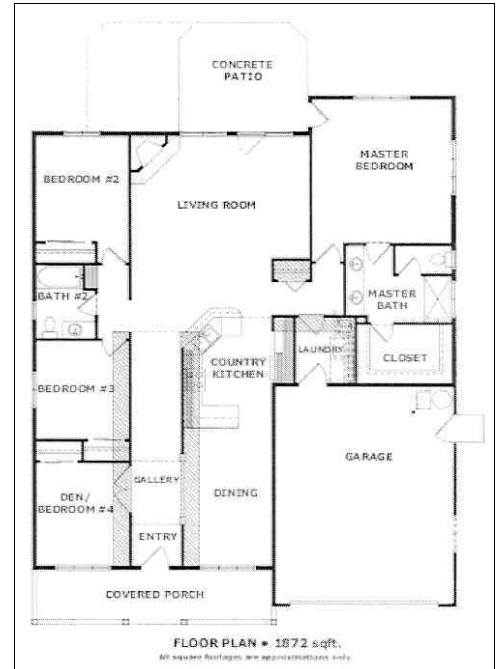
2336 NW Summerhill Dr.

(Shevlin Meadows)

MLS # 2710798

Just \$347,000

Delightful one-level home on Bend's desirable Westside with spacious open floor plan. You'll love the centrally located kitchen with beautiful Alder wood cabinets, breakfast bar and open to the great room and dining area. Other quality features includes a wide gallery like entrance, large separated master bedroom suite, Hardie lap siding on all sides of the home, natural wood faced garage door, big front porch with rough hewn timbers, beautiful wood wrapped windows & doors inside, fenced back yard with patio, fully landscaped and easy to maintain with automatic sprinklers. There is lots to like about this home, and it is a Westside best buy.



- 4 Bedrooms
- 1,872 Square Feet
- Greatroom Open To Kitchen
- 4th Bedroom/Den W/ French Doors
- Central Gas Heat & Fireplace
- 1.75 Baths
- Built in 2005
- Large Master Bedroom Suite
- Dining Or Additional Living Area
- Coaxial & Tele. Wired Throughout

**Contact David for more information or a private showing!
Or go to Featured Properties at www.DavidFoster.Biz.**

"The Service You Deserve"

Since 1990



David Foster

Broker, GRI, CSP

Direct: (541)322-9934 • Office: (541)382-5657

Toll Free: (800)700-5657 • Fax: (541)385-8155

Email: david@davidfoster.biz • Web Page: www.davidfoster.biz

RE/MAX
equity group, inc.

210 SW Wilson Ave.
Old Mill District
Bend, Oregon 97702

